



LEASING OPPORTUNITY

WOOD STREET COMMERCIAL SUITES

300 Wood Street | Pittsburgh, PA 15222



SUITES AVAILABLE

FOURTH FLOOR - 9,435 SF

FIFTH FLOOR - 2,000 SF

MEZZANINE - UP TO 4,550 SF

PROPERTY HIGHLIGHTS

- Historic building with old world charm, but all the modern conveniences
- Property has been retrofitted with many upgrades, such as the HVAC system, elevators and facade
- Secure building with 24/7 tenant access
- Sprinkler system
- ADA compliant
- Common area conference room
- On-site management
- Location allows easy access in and out of the city
- Nearly 2,000 public parking spaces available within a 3-block radius
- On bus line; stop is right at front door
- Within walking distance to Market Square, Point State Park, Cultural District attractions, and many of downtown's retail and dining establishments
- Generous tenant improvement allowance for build-to-suit suites

Massaro
PROPERTIES, LLC
www.massaroproperties.com

FOR FURTHER INFORMATION CONTACT:

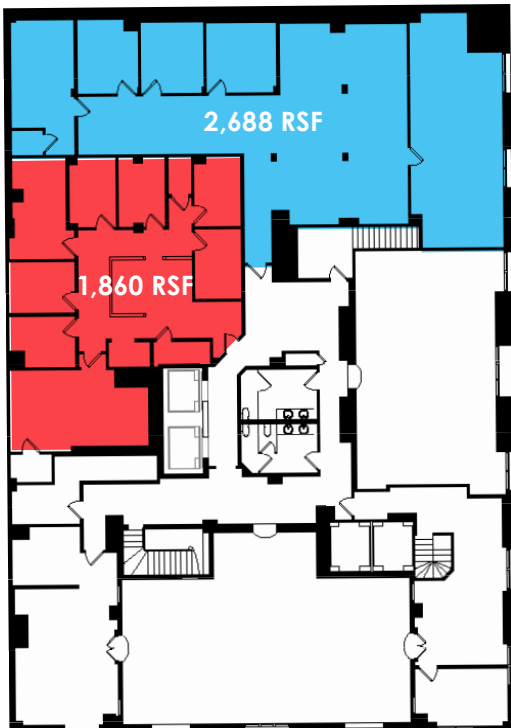
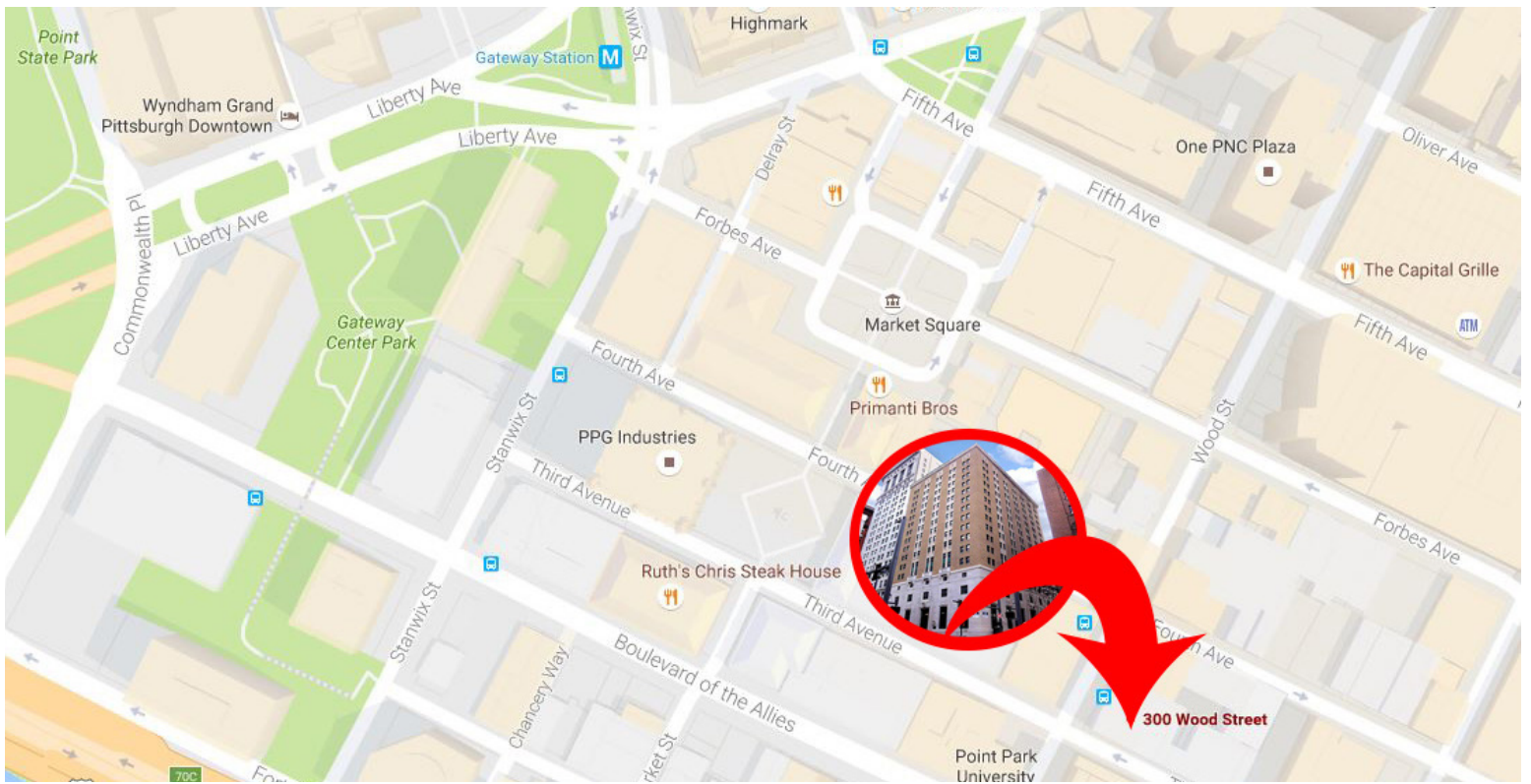
MARTHA L. GRAHAM

Associate Broker

120 Delta Drive | Pittsburgh, PA 15238

T. 412.963.2800 x236 C. 412.855.7750 F. 412.490.1720

mgraham@massaroproperties.com



Mezzanine space

4th floor space

